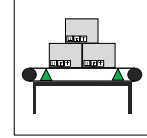
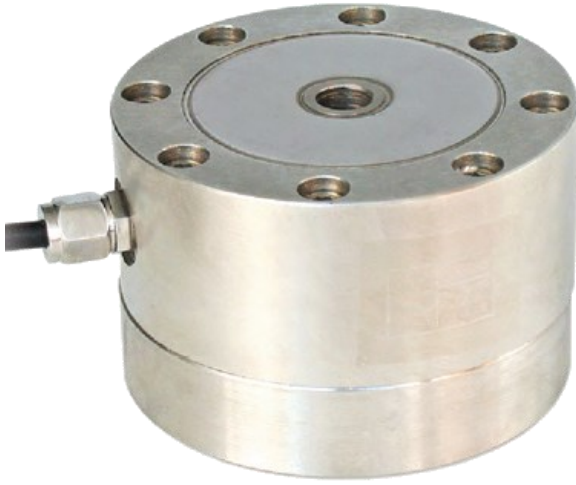


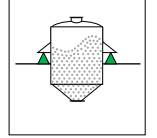
# Model: 3201



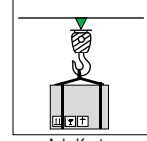
5 t ... 20 t



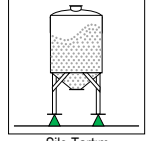
Konveyör Tartım



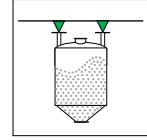
Tank Tartım



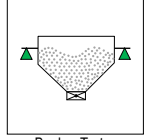
Aski Kantarı



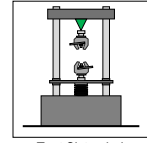
Silo Tartım



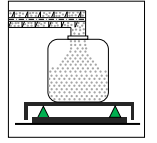
Asma Tank



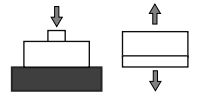
Bunker Tartım



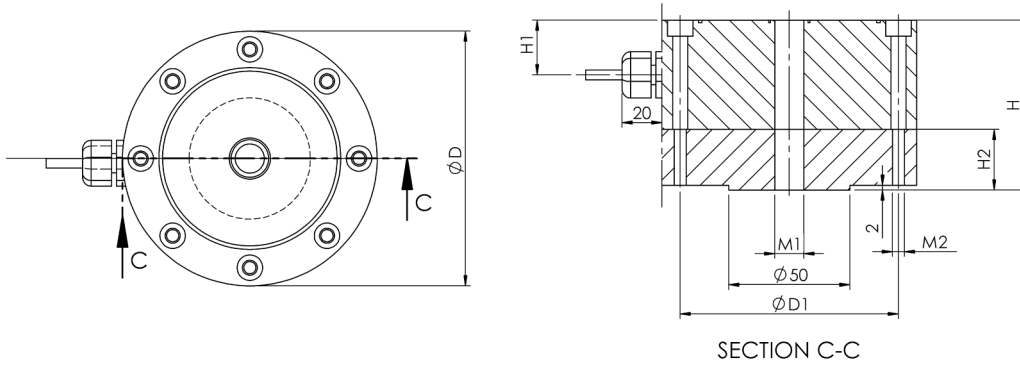
Test Sistemleri



Dolum Uygulamaları



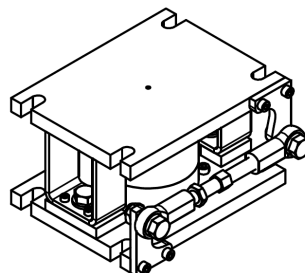
## Ölçüler (mm)



Kapasite (t)	Ölçüler (mm)						
	ØD	ØD1	H	H1	H2	M1	M2
5	120	104.5	80	25	30	M20x1.5	M8x65
10 ... 20	Ø155	133	90	27.5	35	M32x2	M10x75

## Kullanım Şekli / Montaj Aparatı

3201-M01



# Model: 3201

## Teknik Özellikler

	Parametreler	Değer		Birim
1	Nominal Kapasite ( $E_{max}$ )	5	10, 20	ton
2	Sinyal Kazancı	$2 \pm \%0.3$		mV/V
3	Toplam Hata	$\leq \pm \%0.05$	$\leq \pm \%0.1$	%FSO
4	Sürünme Hatası	$< \pm 0,03$		%FSO
5	Sfır Üzerine Sıcaklık Etkisi	$< \pm 0,02$		%FSO / °C
6	Çıkış Üzerine Sıcaklık Etkisi	$< \pm 0,02$		%FSO / °C
7	Sıcaklık Aralığı (Düzeltilmiş)	-10 ... +40		°C
8	Sıcaklık Aralığı (Güvenli)	-30 ... +70		°C
9	Güvenli Aşın Yükleme	150		% $E_{max}$
10	Kırılma kapasitesi	200		% $E_{max}$
11	Besleme Gerilimi (Tavsiye)	10 ... 12		V
12	Besleme Gerilimi (Maks)	15		V
13	Giriş Direnci	$400 \pm 20$		$\Omega$
14	Çıkış Direnci	$352 \pm 3$		$\Omega$
15	Yalıtım Direnci	$> 5000$		M $\Omega$ (100V)
16				
17				
18				

(\*) FSO = Full Scale Output

## Kablo Özellikleri

Kablo Uzunluğu .....:12 m

Kablo Çapı ..... : $\varnothing 6$  mm

