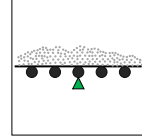


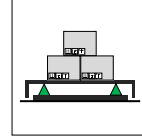
Model: 2103 - T



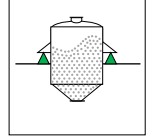
300 kg ... 2.000 kg



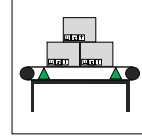
Bant Kantarı



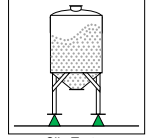
Platform Tartım



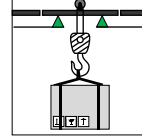
Tank Tartım



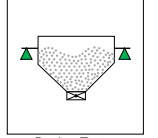
Konveyör Tartım



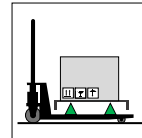
Silo Tartım



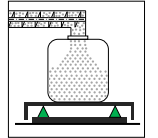
Monoray Tartı



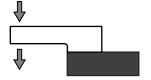
Bunker Tartım



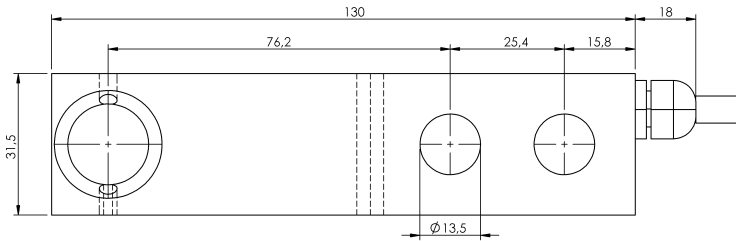
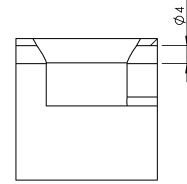
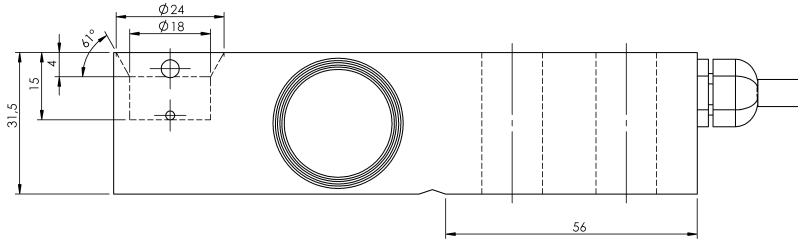
Transpalet Tartım



Dolum Uygulamaları



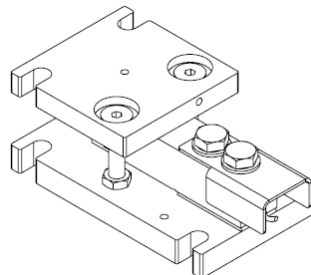
Ölçüler (mm)



Kullanım Şekli / Montaj Aparatı

(*) Ayrıntılar "Montaj Aparatları" kısmında verilmiştir.

2103-M02



Teknik Özellikler

	Parametreler	Değer	Birim
1	Nominal Kapasite (E_{max})	300, 500, 750, 1000, 1500, 2000	kg
2	Sinyal Kazancı	2	mV/V
3	Doğruluk Sınıfı	C3	
4	$Y=E_{max}/V_{min}$	10.000	
5	Toplam Hata	$< \pm 0,017$	%FSO
6	Sürünme Hatası	$< \pm 0,016$	%FSO
7	Sfır Üzerine Sıcaklık Etkisi	$< \pm 0,002$	%FSO / °C
8	Çıkış Üzerine Sıcaklık Etkisi	$< \pm 0,0012$	%FSO / °C
9	Sfır Dengesi	$< \pm 2$	%FSO
10	Sıcaklık Aralığı (Düzeltilmiş)	-10 ... +40	°C
11	Sıcaklık Aralığı (Güvenli)	-30 ... +70	°C
12	Güvenli Aşırı Yükleme	200	% E_{max}
13	Kırılma kapasitesi	300	% E_{max}
14	Besleme Gerilimi (Tavsiye)	5 ... 15	V
15	Besleme Gerilimi (Maks)	15	V
16	Giriş Direnci	400 ± 20	Ω
17	Çıkış Direnci	350 ± 3	Ω
18	Yalıtım Direnci	> 5000	M Ω (100V)

(*) FSO = Full Scale Output

Kablo Özellikleri

Kablo Uzunluğu:5 m
 Kablo Çapı:Ø5.7 mm
 Kablo Malzemesi:Poliüretan

