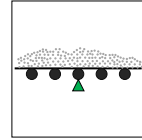


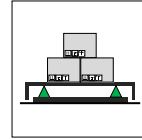
# Model: 2101 - L1



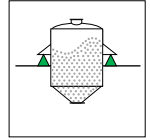
75 kg ... 5.000 kg



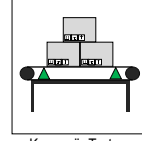
Bant Kantarı



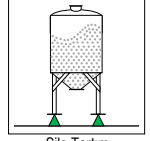
Platform Tartım



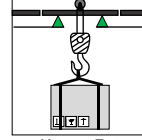
Tank Tartım



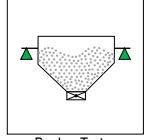
Konveyör Tartım



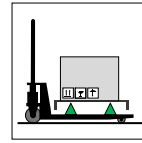
Silo Tartım



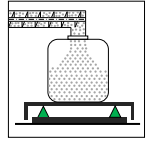
Monoray Tartı



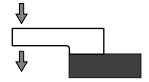
Bunker Tartım



Transpalet Tartım

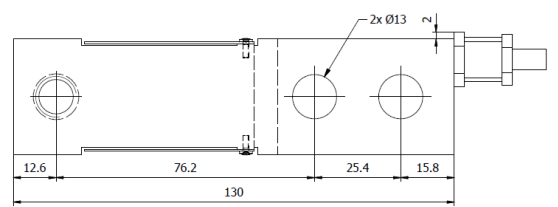
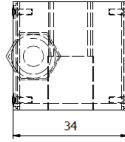
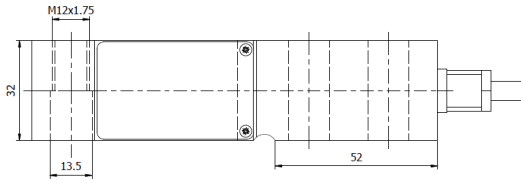


Dolum Uygulamaları

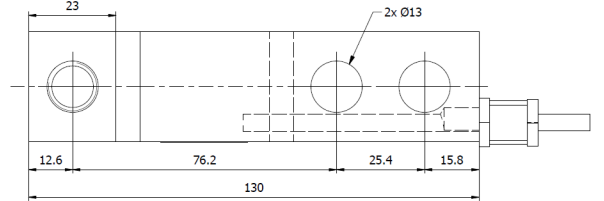
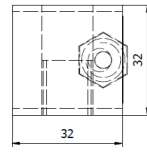
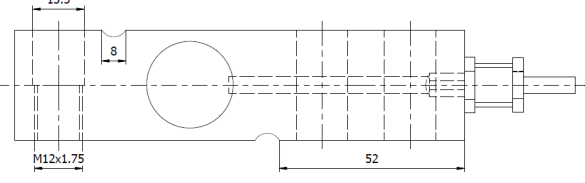


## Ölçüler (mm)

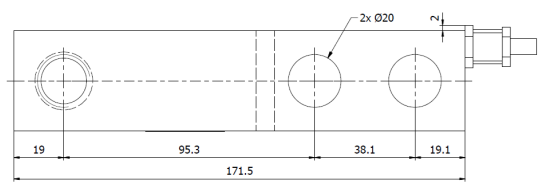
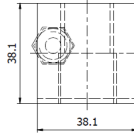
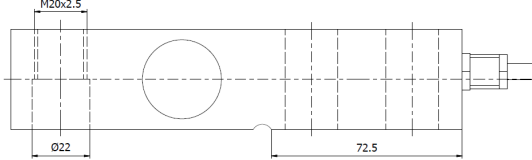
75 kg ... 300 kg



500 kg ... 2000 kg



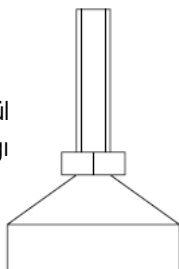
3000 kg ... 5000 kg



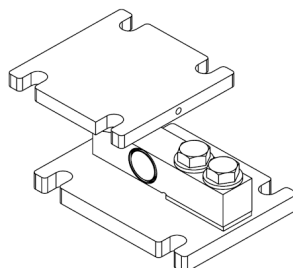
## Kullanım Şekli / Montaj Aparatı

(\*) Ayrıntılar "Montaj Aparatları" kısmında verilmiştir.

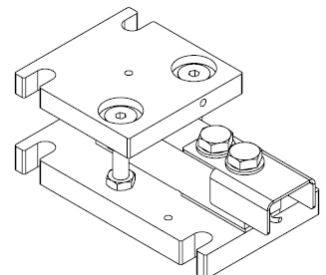
Bilyalı Baskül  
Ayağı



2101-M01



2101-M02



## Teknik Özellikler

	Parametreler	Değer		Birim
1	Nominal Kapasite ( $E_{max}$ )	75, 150, 300, 500	1000, 2000, 3000, 5000	kg
2	Sinyal Kazancı	2.0 ± %0.1		mV/V
3	Doğruluk Sınıfı	-	C3	
4	$Y=E_{max}/V_{min}$	-	12.000	
5	Toplam Hata	< ± 0,02		%FSO
6	Sıfır Dengesi	< ± 2		%FSO
7	Sıfır Üzerine Sıcaklık Etkisi	0.002		%FSO / °C
8	Çıkış Üzerine Sıcaklık Etkisi	0.0012		%FSO / °C
9	Sıcaklık Aralığı (Düzeltilmiş)	-10 ... +40		°C
10	Sıcaklık Aralığı (Güvenli)	-20... +70		°C
11	Güvenli Aşın Yükleme	150		% $E_{max}$
12	Kırılma kapasitesi	250		% $E_{max}$
13	Besleme Gerilimi (Maks)	15		V
14	Giriş Direnci	400 ± 10		Ω
15	Çıkış Direnci	352 ± 2		Ω
16	Yalıtım Direnci	> 5000		MΩ
17				
18				

(\*) FSO = Full Scale Output

## Kablo Özellikleri

Kablo Uzunluğu .....:6 m

Kablo Çapı .....:Ø5 mm

