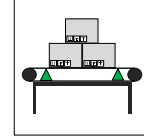
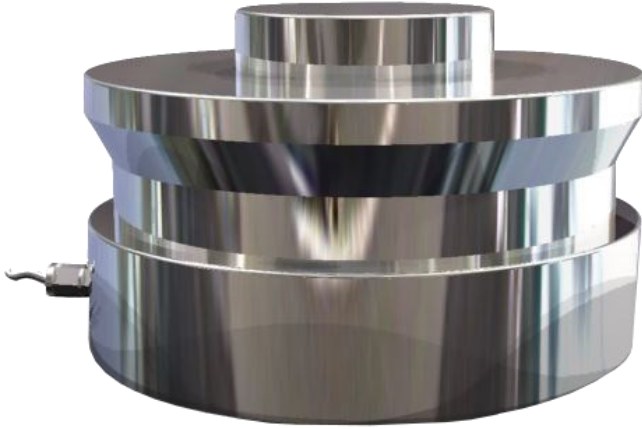


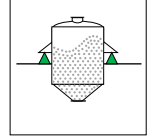
Model: 3102 - B



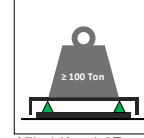
10 t ... 470 t



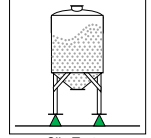
Konveyör Tartım



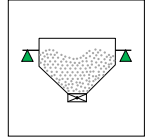
Tank Tartım



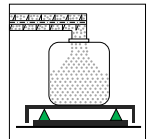
Yüksek Kapasiteli Tartım



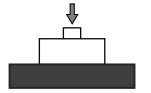
Silo Tartım



Bunker Tartım

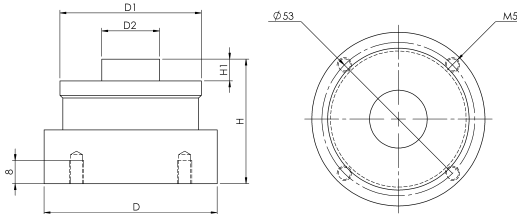


Dolum Uygulamaları

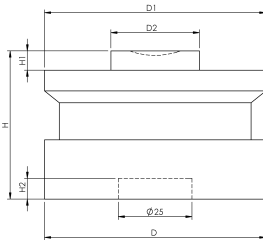


Ölçüler (mm)

1t ... 4.7 t



10t ... 47 t

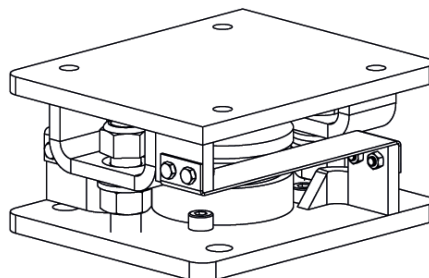


Kapasite (t)	Ölçüler (mm)					
	H	H1	H2	ØD	ØD1	ØD2
1	43	7.5	-	60	49	20
2.2	43	7.5	-	60	49	20
4.7	43	7.5	-	60	49	20
10	50	6.5	7	75	74	30
15	50	6.5	7	75	75	30
22	50	6.5	7	75	75	30
33	65	10	7	95	95	40
47	75	14	7	130	130	60
68	85	14	7	130	130	60
100	90	16	7	150	150	70
150	100	16	7	150	150	70
220	130	24	10	225	225	100
330	145	24	10	225	225	100
470	170	28	10	270	270	120

Kullanım Şekli / Montaj Aparatı

(*) Ayrıntılar "Montaj Aparatları" kısmında verilmiştir.

3102-M01



Teknik Özellikler

	Parametreler	Değer	Birim
1	Nominal Kapasite (E_{max})	1, 2.2, 4.7, 10, 15, 22, 33, 47, 68, 100, 150, 220, 330, 470	ton
2	Sinyal Kazancı	$2 \pm \%0.1$	mV/V
3	Doğruluk Sınıfı	C3	
4	$Y=E_{max}/V_{min}$	10.000	
5	Toplam Hata	$< \pm 0.015$	%FSO
6	Sıfır Üzerine Sıcaklık Etkisi	$< \pm 0.0012$	%FSO / °C
7	Çıkış Üzerine Sıcaklık Etkisi	$< \pm 0.0008$	%FSO / °C
8	Sıfır Dengesi	$< \pm 1$	%FSO
9	Sıcaklık Aralığı (Düzeltilmiş)	-20 ... +70	°C
10	Sıcaklık Aralığı (Güvenli)	-20 ... +160	°C
11	Güvenli Aşırı Yükleme	150	% E_{max}
12	Kırılma kapasitesi	300	% E_{max}
13	Besleme Gerilimi (Tavsiye)	8 ... 24	V
14	Besleme Gerilimi (Maks)	48	V
15	Giriş Direnci	775 ± 5 ($\leq 33t$), 1550 ± 10 ($> 33t$)	Ω
16	Çıkış Direnci	702 ± 2 ($\leq 33t$), 1402 ± 2 ($> 33t$)	Ω
17	Yalıtım Direnci	> 5000	M Ω
18			

(*) FSO = Full Scale Output

Kablo Özellikleri

Kablo Uzunluğu:.....5 m ($\leq 15t$ & $\geq 100t$), 13m (22t ... 68t)

Kablo Çapı:.....:Ø6 mm

